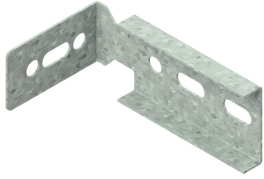


I6KLM100AH

Horizontal branch hook for I6KLM100



Slides in the C-opening of the sidewalls .

Reference	↕ mm	↔ mm	→ ← mm	↔ mm	kg/stk	📦	Unit
I6KLM100AH	71	169		100	0,241	2	STK

Minimum number bolts and nuts: 4 pieces.

Pickled and passivated.

Fix with:



Giant washer
(DIN 125-1 A)
I6RO



Nut (DIN 934)
I6M



Round head
square neck bolt
(DIN 603)
I6RBK