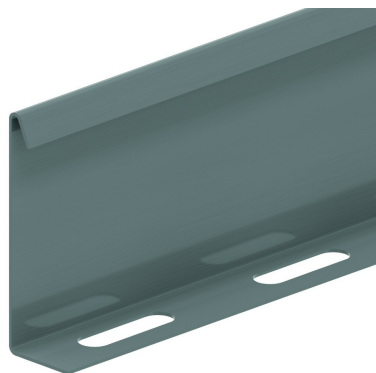


# SLOS

## Bolt-in partition



Standard finish Pre-galvanised

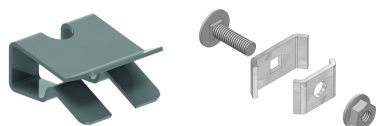
Optional finish

Optional finish PE

Coating

HD	Reference	↑ mm	↔ mm	→  ← mm	↔ mm	kg/m	📦	Stock	Unit
-	<b>SLOS35</b>	28			3000	0,330	150	X	M
-	<b>SLOS60</b>	53			3000	0,511	120	X	M
-	<b>SLOS60.2000</b>	53			2000	0,848	520		M
-	<b>SLOS85</b>	78			3000	0,680	60	X	M
-	<b>SLOS110</b>	103			3000	0,820	30	X	M
-	<b>ZMSLOS35</b>	28			3000	0,257	150	X	M
-	<b>ZMSLOS60</b>	60			3000	0,397	120	X	M
-	<b>ZMSLOS85</b>	78			3000	0,529	60		M
-	<b>ZMSLOS110</b>	103			3000	0,638	30	X	M

### Fix with:



Clips for fixing  
SLOS to VFU(L)  
VFSLOSCL

Joining clamp  
VFK

Fixing set: 1 per meter.

