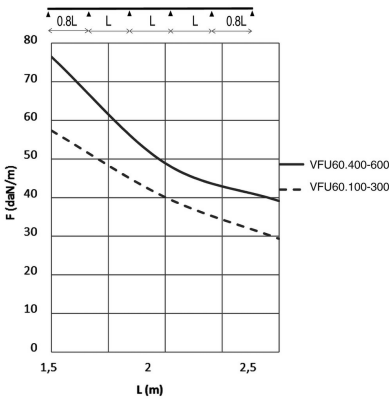
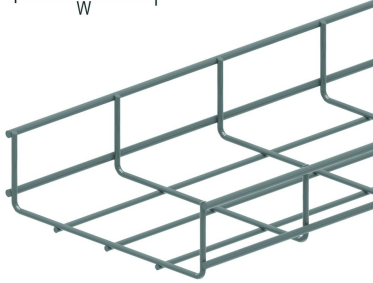
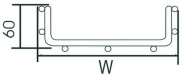


VFU60

Wire cable tray for heavy duty



Screen: 50 x 100 mm
Wire: Ø 4.50 mm and 5.50 mm

| | |
|-----------------|----------------|
| Standard finish | Pre-galvanised |
| Optional finish | |

| | |
|--------------------|---------|
| Optional finish PE | Coating |
|--------------------|---------|

| HD | Reference | ↑ mm | ↔ mm | → ← mm | ↔ mm | kg/m | 📦 | Stock | Unit |
|----|--------------------|---------|---------|------------|---------|-------|----|-------|------|
| - | VFU60.100 | 60 | 99 | | 3000 | 1,200 | 30 | X | M |
| - | VFU60.200 | 60 | 199 | | 3000 | 1,430 | 30 | X | M |
| - | VFU60.300 | 60 | 299 | | 3000 | 1,780 | 30 | X | M |
| - | VFU60.400 | 60 | 399 | | 3000 | 2,120 | 30 | X | M |
| - | VFU60.500 | 60 | 499 | | 3000 | 2,470 | 30 | X | M |
| - | VFU60.600 | 60 | 599 | | 3000 | 2,810 | 30 | X | M |
| - | ZAVFU60.100 | 60 | 100 | | 3000 | 1,2 | 30 | X | M |
| - | ZAVFU60.200 | 60 | 200 | | 3000 | 1,43 | 30 | X | M |
| - | ZAVFU60.300 | 60 | 300 | | 3000 | 1,78 | 30 | X | M |
| - | ZAVFU60.400 | 60 | 400 | | 3000 | 2,12 | 30 | X | M |
| - | ZAVFU60.500 | 60 | 500 | | 3000 | 2,47 | 30 | X | M |
| - | ZAVFU60.600 | 60 | 600 | | 3000 | 2,81 | 30 | X | M |

LOAD DIAGRAM

This diagram illustrates the permissible uniformly distributed loads applied to multiple supports. They comply with IEC 61537 with connection to 1/5 of the span and the end span = 0,8x the span. When the joint is situated in the centre of the span, a reduction of 0,7x the admissible load is to be taken into account.

F = max. admissible load (daN/m)

L = support distance (m)

Max. deflection (m) = L/100

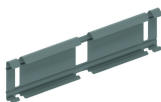
Usable inside height: outside height - 9mm

Usable inside width: outside width - 17mm

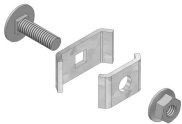
Fix with:



Support joiner for VFU(L) VFKS



Snap-on joiner for VFU(L) KPVF



Joining clamp VFK