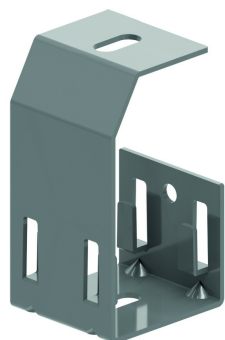


# OBGVF

## Open C-suspension bracket for VFU(L)



Max. load: 15 daN

Reference	↕ mm	↔ mm	→  ← mm	↔ mm	kg/stk	📦	Unit
<b>OBGVF050</b>	135	55			0,175	12	STK
<b>OBGVF100</b>	135	102			0,245	12	STK

To be mounted with threaded rod TIM6 or TIM8.  
Max. load (in daN): uniformly distributed over complete width of cantilever brackets.

