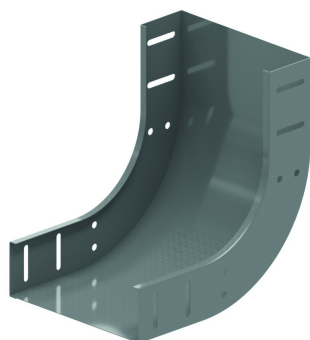


# SB90

## Rising elbow 90°



Slides over the cable trays

Radius: 100 mm

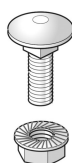
To order: Height 35 mm - 85 mm - 110 mm (just in SZ and HD)

Reference	Finish	↑ mm	↔ mm	→  ← mm	↔ mm	kg/stk	📦	Unit
<b>ZMSB90.110.100</b>	DF	110	100	0,75		0,910	1	STK
<b>ZMSB90.110.150</b>	DF	110	150	0,75		1,057	1	STK
<b>ZMSB90.110.200</b>	DF	110	200	0,75		1,204	1	STK
<b>ZMSB90.110.300</b>	DF	110	300	0,75		1,498	1	STK
<b>ZMSB90.110.400</b>	DF	110	400	0,75		1,793	1	STK
<b>ZMSB90.110.500</b>	DF	110	500	0,75/0,9		2,087	1	STK
<b>ZMSB90.110.600</b>	DF	110	600	0,75/0,9		2,381	1	STK
<b>ZMSB90.85.100</b>	DF	85	100	0,75		0,750	1	STK
<b>ZMSB90.85.150</b>	DF	85	150	0,75		0,887	1	STK
<b>ZMSB90.85.200</b>	DF	85	200	0,75		1,023	1	STK
<b>ZMSB90.85.300</b>	DF	85	300	0,75		1,296	1	STK
<b>ZMSB90.85.400</b>	DF	85	400	0,75		1,568	1	STK
<b>ZMSB90.85.500</b>	DF	85	500	0,75/0,9		1,841	1	STK
<b>ZMSB90.85.600</b>	DF	85	600	0,75/0,9		2,114	1	STK
<b>ZMSB90.60.050</b>	DF	60	50			0,476	1	STK
<b>ZMSB90.60.075</b>	DF	60	75			0,539	1	STK
<b>ZMSB90.60.100</b>	DF	60	100			0,601	1	STK
<b>ZMSB90.60.150</b>	DF	60	150			0,727	1	STK
<b>ZMSB90.60.200</b>	DF	60	200			0,852	1	STK
<b>ZMSB90.60.300</b>	DF	60	300			1,104	1	STK
<b>ZMSB90.60.400</b>	DF	60	400			1,355	1	STK
<b>ZMSB90.60.500</b>	DF	60	500			1,606	1	STK
<b>ZMSB90.60.600</b>	DF	60	600			1,857	1	STK

### Fix with:



Toothed round head bolt / flange nut  
VM



Round head square neck bolt / flange nut  
VMK

Minimum number bolts and nuts: 8 pieces.

### Legend finish

- DF = Defender