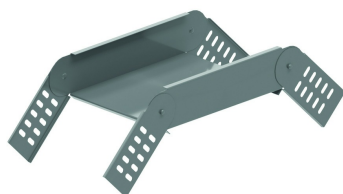


# SDB

## Hinged joiner double

To order: Height 35 mm - 85 mm - 110 mm

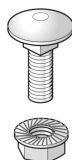
Standard finish



### Fix with:



Toothed round head bolt / flange nut  
VM



Round head square neck bolt / flange nut  
VMK

HD	Reference	↕ mm	↔ mm	→  ← mm	↔ mm	kg/stk	📦	Stock	Unit
-	<b>ZMSDB35.050</b>	35	50			0,470	1		STK
-	<b>ZMSDB35.075</b>	35	75			0,520	1		STK
-	<b>ZMSDB35.100</b>	35	100			0,560	1		STK
-	<b>ZMSDB35.150</b>	35	150			0,650	1		STK
-	<b>ZMSDB35.200</b>	35	200			0,740	1		STK
-	<b>ZMSDB35.300</b>	35	300			0,920	1		STK
-	<b>ZMSDB35.400</b>	35	400			1,100	1		STK
-	<b>ZMSDB35.500</b>	35	500			1,280	1		STK
-	<b>ZMSDB35.600</b>	35	600			1,460	1		STK
-	<b>ZMSDB60.050</b>	60	50			0,700	1		STK
-	<b>ZMSDB60.075</b>	60	75			0,740	1		STK
-	<b>ZMSDB60.100</b>	60	100			0,790	1		STK
-	<b>ZMSDB60.150</b>	60	150			0,880	1		STK
-	<b>ZMSDB60.200</b>	60	200			0,970	1		STK
-	<b>ZMSDB60.300</b>	60	300			1,150	1		STK
-	<b>ZMSDB60.400</b>	60	400			1,330	1		STK
-	<b>ZMSDB60.500</b>	60	500			1,510	1		STK
-	<b>ZMSDB60.600</b>	60	600			1,670	1		STK
-	<b>ZMSDB85.100</b>	85	100			1,270	1		STK
-	<b>ZMSDB85.150</b>	85	150			1,360	1		STK
-	<b>ZMSDB85.200</b>	85	200			1,450	1		STK
-	<b>ZMSDB85.300</b>	85	300			1,630	1		STK
-	<b>ZMSDB85.400</b>	85	400			1,810	1		STK
-	<b>ZMSDB85.500</b>	85	500			1,990	1		STK
-	<b>ZMSDB85.600</b>	85	600			2,170	1		STK
-	<b>ZMSDB110.200</b>	110	200			1,900	1		STK
-	<b>ZMSDB110.300</b>	110	300			2,080	1		STK
-	<b>ZMSDB110.400</b>	110	400			2,260	1		STK
-	<b>ZMSDB110.500</b>	110	500			2,440	1		STK
-	<b>ZMSDB110.600</b>	110	600			2,620	1		STK

Minimum number bolts and nuts: 8 pieces.