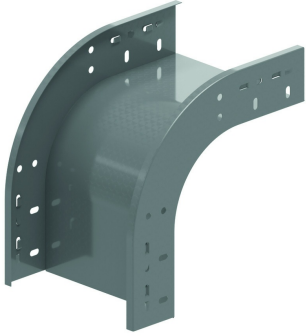


# VBCL

## Snap-in low elbow 90°



Snap-in system with cable tray KBSC60, KBS60 and KBSI60

Radius: 100 mm

Standard finish

Pre-galvanised

Optional finish

Optional finish PE

Coating

HD Reference	↑ mm	↔ mm	→  ← mm	↔ mm	kg/stk	📦	Stock	Unit
- <b>VBCL90.60.050</b>	60	50			0,550	1	X	STK
- <b>VBCL90.60.075</b>	60	75			0,630	1	X	STK
- <b>VBCL90.60.100</b>	60	100			0,650	1	X	STK
- <b>VBCL90.60.150</b>	60	150			0,780	1	X	STK
- <b>VBCL90.60.200</b>	60	200			0,850	1	X	STK
- <b>VBCL90.60.300</b>	60	300			1,080	1	X	STK
- <b>VBCL90.60.400</b>	60	400			1,330	1	X	STK
- <b>VBCL90.60.500</b>	60	500			1,430	1	X	STK
- <b>VBCL90.60.600</b>	60	600			1,600	1	X	STK
- <b>ZMVBCL90.60.050</b>	60	50			0,55	1	X	STK
- <b>ZMVBCL90.60.075</b>	60	75			0,65	1	X	STK
- <b>ZMVBCL90.60.100</b>	60	100			0,73	1	X	STK
- <b>ZMVBCL90.60.150</b>	60	150			0,88	1	X	STK
- <b>ZMVBCL90.60.200</b>	60	200			1	1	X	STK
- <b>ZMVBCL90.60.300</b>	60	300			1,18	1	X	STK
- <b>ZMVBCL90.60.400</b>	60	400			1,43	1	X	STK
- <b>ZMVBCL90.60.500</b>	60	500			1,9	1	X	STK
- <b>ZMVBCL90.60.600</b>	60	600			2,15	1	X	STK

Opening for extra locking using 4x VM6.10.

Openings provided for fitting a cover.

Only available in height 60 mm.