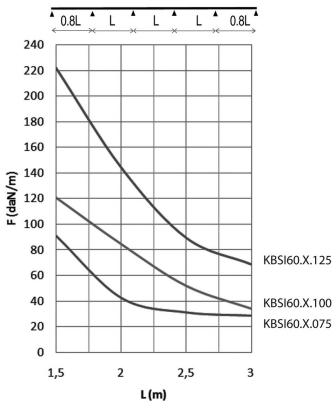
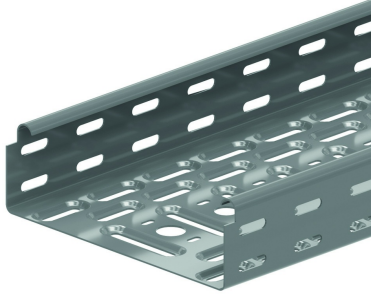


# KBSI60

## Cable tray with interlocking ends

Interlocking ends  
Alternative perforations  
Return flanges



Standard finish		Pre-galvanised							
Optional finish PE		Coating							
HD	Reference	↑ mm	↔ mm	→  ← mm	↔↔ mm	kg/m	📦	Stock	Unit
-	<b>KBSI60.075.125</b>	60	75	1,25	3000	1,750	60	X	M
-	<b>KBSI60.100.125</b>	60	100	1,25	3000	1,950	60	X	M
-	<b>KBSI60.150.125</b>	60	150	1,25	3000	2,360	30	X	M
-	<b>KBSI60.200.125</b>	60	200	1,25	3000	2,770	30	X	M
-	<b>KBSI60.300.125</b>	60	300	1,25	3000	3,580	30	X	M
-	<b>KBSI60.400.125</b>	60	400	1,25	3000	4,400	30	X	M
-	<b>KBSI60.500.125</b>	60	500	1,25	3000	5,210	30	X	M
-	<b>KBSI60.600.125</b>	60	600	1,25	3000	6,030	30	X	M

### LOAD DIAGRAM

This diagram illustrates the permissible uniformly distributed loads applied to multiple supports. They comply with IEC 61537 with connection in the centre of the span and the end span = 0,8 x the span.

F = max. admissible load (daN/m)

L = support distance (m)

Max. deflection (m) = L/100

### Fix with:



Toothed round head bolt / flange nut VM

Fast locking for KBSI KBV

Other lengths on request: min. 2 m / max. 6 m per steps of 100 mm.

