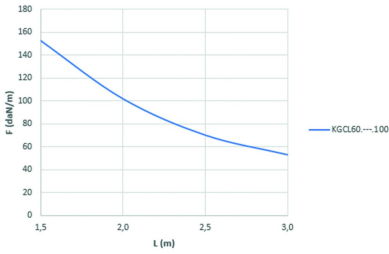
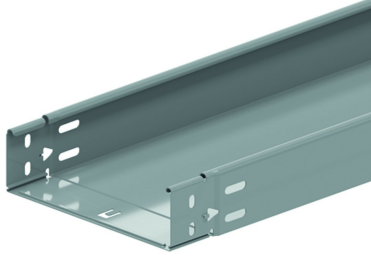


KGCL60

Cable tray not perforated, clickable

- Clickable ends
- Closed bottom
- Prefabricated click fold



	1,5	2,0	2,5	3,0
KGCL60....100	152,5	101,7	69,9	52,8

Standard finish	Pre-galvanised
Optional finish	
Optional finish PE	Coating

HD	Reference	↑ mm	↔ mm	→ ← mm	↔ mm	kg/m	📦	Stock	Unit
-	KGCL60.075.100	60	75	1	3000	1,700	60		M
-	KGCL60.100.100	60	100	1	3000	1,900	60		M
-	KGCL60.150.100	60	150	1	3000	2,300	30		M
-	KGCL60.200.100	60	200	1	3000	2,700	30		M
-	KGCL60.300.100	60	300	1	3000	3,500	30		M
-	KGCL60.400.100	60	400	1	3000	4,300	30		M
-	ZMKGCL60.075.100	60	75	1	3000	1,700	30		M
-	ZMKGCL60.100.100	60	100	1	3000	1,900	30		M
-	ZMKGCL60.150.100	60	150	1	3000	2,300	30		M
-	ZMKGCL60.200.100	60	200	1	3000	2,700	30		M
-	ZMKGCL60.300.100	60	300	1	3000	3,500	30		M
-	ZMKGCL60.400.100	60	400	1	3000	4,300	30		M

LOAD DIAGRAM

This diagram illustrates the permissible uniformly distributed loads applied to multiple supports. They comply with IEC 61537 with connection in the centre of the span and the end span = 0,8 x the span.

- F = max. admissible load (daN/m)
- L = support distance (m)
- Max. deflection (m) = L/100