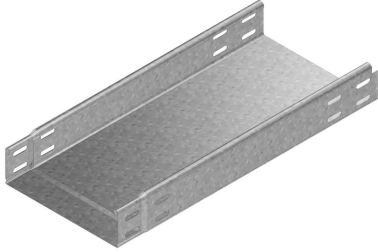


KGI60

Cable tray not perforated, interlocking



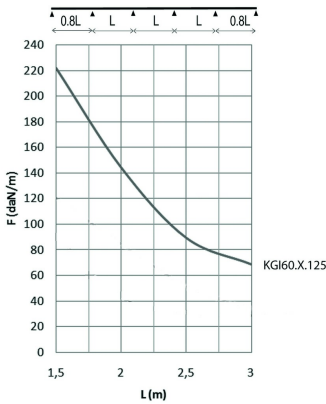
Not perforated
Return flanges

To order: Height 35 mm

Standard finish

Pre-galvanised

| HD | Reference | ↑ mm | ↔ mm | → ← mm | ↔ mm | kg/m | 📦 | Stock | Unit |
|----|----------------------|---------|---------|------------|---------|-------|---|-------|------|
| - | KGI60.300.125 | 60 | 300 | 1,25 | 3000 | 4,300 | 3 | X | M |
| - | KGI60.400.125 | 60 | 400 | 1,25 | 3000 | 5,300 | 3 | X | M |
| - | KGI60.500.125 | 60 | 500 | 1,25 | 3000 | 6,300 | 3 | X | M |
| - | KGI60.600.125 | 60 | 600 | 1,25 | 3000 | 7,300 | 3 | X | M |



LOAD DIAGRAM

This diagram illustrates the permissible uniformly distributed loads applied to multiple supports. They comply with IEC 61537 with connection in the centre of the span and the end span = 0,8 x the span.

F = max. admissible load (daN/m)
L = support distance (m)
Max. deflection (m) = L/100

For widths > 400 in combination with a cover: Please state explicitly in the order.

Fix with:



Fast locking for
KBSI
KBV



Toothed round
head bolt / flange
nut
VM