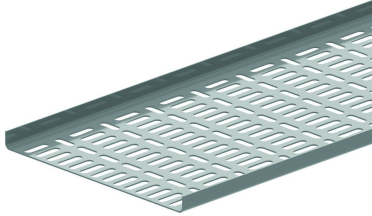


# NATO15

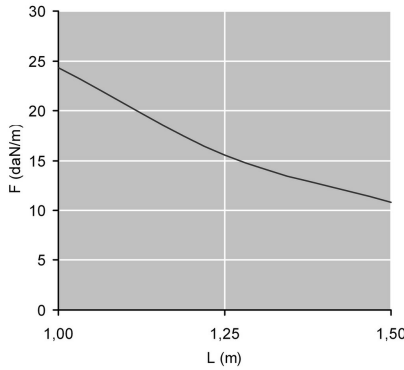
## Perforated cable tray - upright flanges

Linear and alternative perforations  
Upright flanges



Standard finish	Pre-galvanised
Optional finish	Hot-dip galvanised
Optional finish PE	Coating

HD Reference	↑ mm	↔ mm	→  ← mm	↔ mm	kg/m	📦	Stock	Unit
HD <b>NATO15.050.125</b>	15	50	1,25	2000	0,730	40	X	M
HD <b>NATO15.100.125</b>	15	100	1,25	2000	1,050	20	X	M
HD <b>NATO15.150.125</b>	15	150	1,25	2000	1,350	20	X	M
HD <b>NATO15.200.125</b>	15	200	1,25	2000	1,700	20	X	M
HD <b>NATO15.300.125</b>	15	300	1,25	2000	2,400	20	X	M

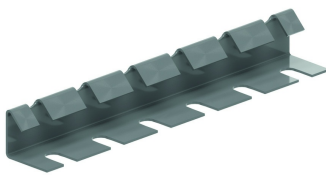


### LOAD DIAGRAM

Mounted in continuous span with the joining plates 1/5 away from the supports. Safety factor = 2.

F = max. admissible load (daN/m)  
L = support distance (m)  
L/200 = deflection (m)

### Fix with:



Joiner  
V15.200