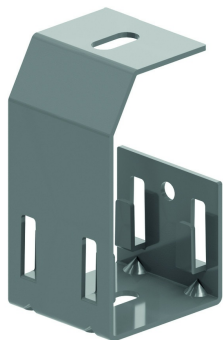


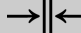
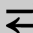



OBGVF  
Suspension en C pour VFU(L)



Charge max.: 15 daN

Référence	 mm	 mm	 mm	 mm	kg/stk		Unité
OBGVF050	135	55			0,175	12	STK
OBGVF100	135	102			0,245	12	STK

A fixer avec tige filetée TIM6 ou TIM8.  
Charge max. (en daN): Répartie uniformément sur toute la largeur.

