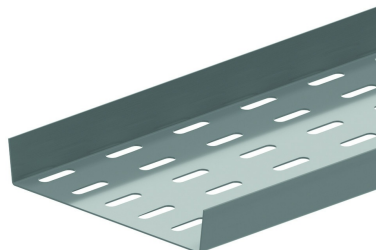


## BP Plaque de fond



| Référence      | Finition | ↕<br>mm | ↔<br>mm | →  ←<br>mm | ↔<br>mm | kg/m  | 📦 | Unité |
|----------------|----------|---------|---------|------------|---------|-------|---|-------|
| <b>BP200</b>   | SZ       | 25      | 141     |            | 3000    | 1,560 | 3 | M     |
| <b>BP300</b>   | SZ       | 25      | 241     |            | 3000    | 2,400 | 3 | M     |
| <b>BP400</b>   | SZ       | 25      | 341     |            | 3000    | 3,230 | 3 | M     |
| <b>BP500</b>   | SZ       | 25      | 441     |            | 3000    | 4,030 | 3 | M     |
| <b>BP600</b>   | SZ       | 25      | 541     |            | 3000    | 4,860 | 3 | M     |
| <b>ZMBP200</b> | DF       | 25      | 141     |            | 3000    | 1,366 | 3 | M     |
| <b>ZMBP300</b> | DF       | 25      | 241     |            | 3000    | 2,048 | 3 | M     |
| <b>ZMBP500</b> | DF       | 25      | 441     |            | 3000    | 3,411 | 3 | M     |
| <b>ZMBP400</b> | DF       | 25      | 341     |            | 3000    | 2,730 | 3 | M     |
| <b>ZMBP600</b> | DF       | 25      | 451     |            | 3000    | 4,093 | 3 | M     |

### A fixer avec:



Boulon à tête  
ronde  
autobloquant  
RB



Ecrou coulissant  
pour profil  
support  
PNS

### Légende de la finition

- SZ = Sendzimir
- DF = Defender