

DKLMZWVB45

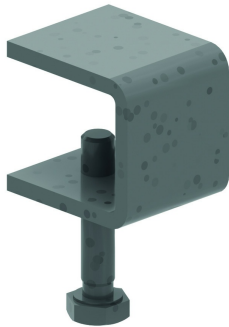
Couvercle pour courbe convexe d'échelle 45°



Rayon: 600 mm

Référence	Finition	↑ mm	↔ mm	→ ← mm	↔ mm	kg/stk	📦	Unité
DKLM125VB45.150	SZ	15	156	0,9		0,835	1	STK
DKLM125VB45.200	SZ	15	206	0,9		1,117	1	STK
DKLM125VB45.300	SZ	15	306	0,9		1,608	1	STK
DKLM125VB45.400	SZ	15	406	0,9		2,234	1	STK
DKLM125VB45.450	SZ	15	456	0,9		2,525	1	STK
DKLM125VB45.500	SZ	15	506	0,9		2,806	1	STK
DKLM125VB45.600	SZ	15	606	0,9		3,370	1	STK
DKLM125VB45.750	SZ	15	756	1,25		5,852	1	STK
DKLM125VB45.800	SZ	15	806	1,25		6,243	1	STK
DKLM125VB45.900	SZ	15	906	1,25		7,025	1	STK
DKLM125VB45.1000	SZ	15	1006	1,25		7,887	1	STK
ZMDKLM125VB45.150	DF	15	156	0,9		0,835	1	STK
ZMDKLM125VB45.200	DF	15	206	0,9		1,117	1	STK
ZMDKLM125VB45.300	DF	15	306	0,9		1,608	1	STK
ZMDKLM125VB45.400	DF	15	406	0,9		2,234	1	STK
ZMDKLM125VB45.450	DF	15	456	0,9		2,525	1	STK
ZMDKLM125VB45.500	DF	15	506	0,9		2,806	1	STK
ZMDKLM125VB45.600	DF	15	606	0,9		3,370	1	STK
ZMDKLM125VB45.750	DF	15	756	1,25		5,852	1	STK
ZMDKLM125VB45.800	DF	15	806	1,25		6,243	1	STK
ZMDKLM125VB45.900	DF	15	906	1,25		7,025	1	STK
ZMDKLM125VB45.1000	DF	15	1006	1,25		7,887	1	STK

A fixer avec:



Attache couvercle
ZMDKIG

Couvercle pour accessoires d'échelle en standard Couvercle peut être utilisée pour les échelles KLM100-KLM125-KLW-KLZ

Légende de la finition

- SZ = Sendzimir
- DF = Defender