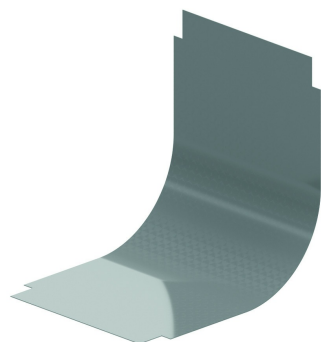


DSB90

Couvercle pour courbe concave VI à 90°



Livré non-plié.

Exec. Std.

Sendzimir

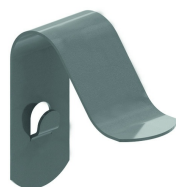
Mat. Opt.

Mat. Opt. PE

Revêtement en poudre

HD	Référence	↕ mm	↔ mm	→ ← mm	↔ mm	kg/stk	📦	Magasin	Unité
-	DSB90.050		50			0,131	1	X	STK
-	DSB90.075		75			0,197	1	X	STK
-	DSB90.100		100			0,262	1	X	STK
-	DSB90.150		150			0,393	1	X	STK
-	DSB90.200		200			0,524	1	X	STK
-	DSB90.300		300			0,786	1	X	STK
-	DSB90.400		400			1,048	1	X	STK
-	DSB90.500		500			1,310	1	X	STK
-	DSB90.600		600			1,572	1	X	STK
-	ZMDSB90.050		50			0,131	1	X	STK
-	ZMDSB90.075		75			0,197	1	X	STK
-	ZMDSB90.100		100			0,262	1	X	STK
-	ZMDSB90.150		150			0,393	1	X	STK
-	ZMDSB90.200		200			0,524	1	X	STK
-	ZMDSB90.300		300			0,786	1	X	STK
-	ZMDSB90.400		400			1,048	1	X	STK
-	ZMDSB90.500		500			1,31	1	X	STK
-	ZMDSB90.600		600			1,572	1	X	STK

A fixer avec:



Attache couvercle
DCL