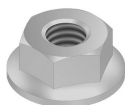




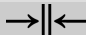


# RM

## Zelfborgende flensmoer (DIN 6923)



Stand. Uitv.	Elektrolytisch verzinkt
Mat. Opt.	Hot-Dip

Referentie	D	M	S	Dc
RM6	6	6	10	14.2
RM8	8	8	13	17.9
RM10	10	10	15	21.8
RM12	12	12	18	26

HD	Artikel					kg/stk		Stock	Eenh.
		mm	mm	mm	mm				
HD	<b>RM6</b>			M6		0,003	100		STK
HD	<b>RM8</b>			M8		0,007	100		STK
HD	<b>RM10</b>			M10		0,013	100		STK
HD	<b>RM12</b>			M12		0,021	100		STK

Te bestellen per volle verpakking.

