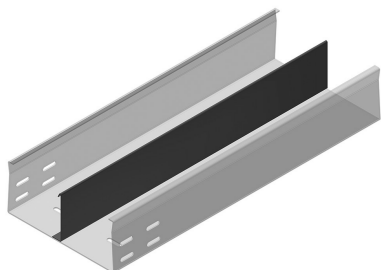
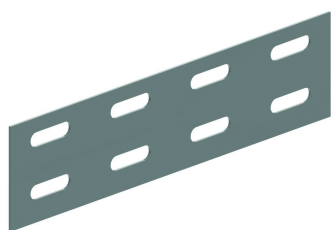


# TFCL85S

## TFCL met SIN



**Te bevestigen met:**



Koppelplaat  
V60.200

| Stand. Uitv.                |         | Sendzimir     |            |         |       |    |       |       |  |
|-----------------------------|---------|---------------|------------|---------|-------|----|-------|-------|--|
| Mat. Opt.                   |         | Hot-Dip       |            |         |       |    |       |       |  |
| Mat. Opt. PE                |         | Poedercoating |            |         |       |    |       |       |  |
| HD Artikel                  | ↕<br>mm | ↔<br>mm       | →  ←<br>mm | ↔<br>mm | kg/m  | 📦  | Stock | Eenh. |  |
| HD <b>TFCL85.100.200S12</b> | 85      | 100           | 2          | 3000    | 5,110 | 30 |       | M     |  |
| HD <b>TFCL85.100.200S13</b> | 85      | 100           | 2          | 3000    | 5,110 | 30 |       | M     |  |
| HD <b>TFCL85.150.200S12</b> | 85      | 150           | 2          | 3000    | 5,910 | 30 |       | M     |  |
| HD <b>TFCL85.150.200S13</b> | 85      | 150           | 2          | 3000    | 5,910 | 30 |       | M     |  |
| HD <b>TFCL85.150.200S23</b> | 85      | 150           | 2          | 3000    | 6,590 | 30 |       | M     |  |
| HD <b>TFCL85.200.200S12</b> | 85      | 200           | 2          | 3000    | 6,710 | 30 |       | M     |  |
| HD <b>TFCL85.200.200S13</b> | 85      | 200           | 2          | 3000    | 6,710 | 30 |       | M     |  |
| HD <b>TFCL85.200.200S23</b> | 85      | 200           | 2          | 3000    | 7,390 | 30 |       | M     |  |
| HD <b>TFCL85.250.200S12</b> | 85      | 250           | 2          | 3000    | 7,510 | 30 |       | M     |  |
| HD <b>TFCL85.250.200S13</b> | 85      | 250           | 2          | 3000    | 7,510 | 30 |       | M     |  |
| HD <b>TFCL85.250.200S23</b> | 85      | 250           | 2          | 3000    | 8,190 | 30 |       | M     |  |
| HD <b>TFCL85.300.200S12</b> | 85      | 300           | 2          | 3000    | 8,310 | 30 |       | M     |  |
| HD <b>TFCL85.300.200S13</b> | 85      | 300           | 2          | 3000    | 8,310 | 30 |       | M     |  |
| HD <b>TFCL85.300.200S23</b> | 85      | 300           | 2          | 3000    | 8,990 | 30 |       | M     |  |

S12: 1 scheidingsshot in het midden van de kabelgoot  
 S13: 1 scheidingsshot op 1/3 van de rand van de kabelgoot  
 S23: 2 scheidingschotten op 1/3 van de rand van de kabelgoot